



ILLUMINATE WITH EFFICIENCY AND DIRECTION



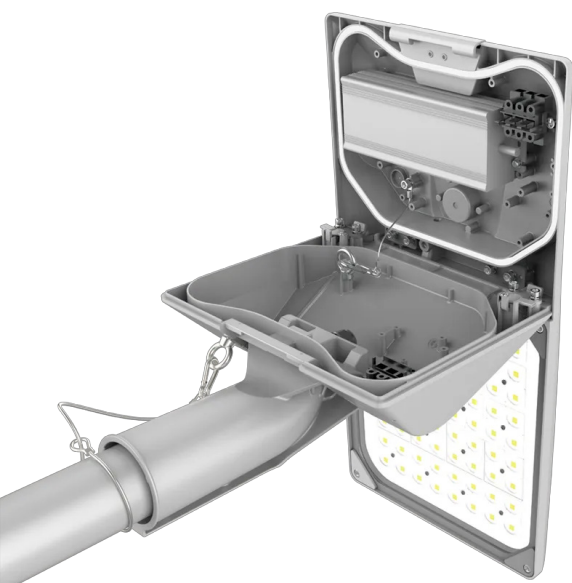
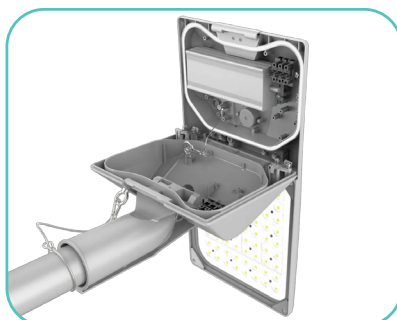
# SLR02

## LED STREET LIGHT SERIES

ENSURES OPTIMAL PERFORMANCE

**120W/150W & 200W**

Offering **Lumen Output of 18,000 Lm to 30,000 Lm**



**SLR02 LED Street Light Series** is a street light series with a lens modular design. It includes four different sizes and models, with a power range of 30W–400W. The modular lens design allows for flexible combinations with 3030 and 5050 LEDs, providing versatile lighting options. SLR02 LED street lights are suitable for a wide range of applications, including country roads, urban roads, highways, parks, industrial parks, plazas, docks, and outdoor parking lots. The 30W–240W models of Storm streetlights feature a smooth surface and corrosion-resistant coating on the heat sink, making them suitable for environments with sand, rain, snow, and even coastal areas with high air corrosion. The light fixture has  $\pm 20^\circ$  adjustability, allowing it to match different pole angles. Different light angles, such as Type II and Type III, are available for two-lane or three-lane roads.



## SLR02 LED STREET LIGHT SERIES

### Main Features:

- **Wattage: 120W, 150W, 200W**
- Light efficiency 135 Lm/W and 150 Lm/W optional, **Lumen output from 13,500 Lm to 36,000 Lm**
- Safety rope to enhance safety and prevent the risk of accidental falls
- Beam angle: Type II, Type III, Type IV, for two-lane or three-lane roads
- IP66 water-proof & 10KV surge protection
- Operating Temperature:  $-30^{\circ}\text{C}$  to  $+50^{\circ}\text{C}$
- Life Span L70B50 10,000h@ $35^{\circ}\text{C}$
- Certificates CE, RoHS available
- **5 years warranty**

### Tool-free Access to Electronic Compartment with a Snap Fastener

Adopt high-power LED patch (Lumileds/Osram) light source, power supply can match any brand.





## Power-off Switch Design, Human and Safer

The power-off switch design of SLR02 street lights prioritizes the safety and convenience of electricians during high-altitude maintenance. It automatically cuts off power when the lamp body is opened, minimizing the risk of electric shock and ensuring a safer working environment.

## Safety Rope

Safety rope is designed to securely fasten the street light to the installation pole, prevent the risk of accidental falls, provide an additional layer of protection, and ensure the reliability of the fixture.

## Lens Modular Design Offers Easy Maintenance

Lens Modular design offers easy maintenance, disassembly, and assembly. This makes it easier to replace or upgrade specific components without the need for extensive disassembly of the entire fixture. This not only reduces mold costs but also streamlines the manufacturing process and optimizes production costs.

## Lens+Glass

The combination of a lens and glass in SLR02 Street lights effectively mitigates the impact of sunlight on the PC lens material. This helps to prevent yellowing and brittleness, leading to reduced light attenuation and improved overall lamp performance stability.

## Distribution Curve

Optional lighting for Type II, Type III, and Type IV, for two-lane or three-lane roads.

## Specifications:

Model	Wattage	CCT	Lumen Output	Dimming	CRI	Certifications
SLR02	120W 140W 200W	3000K/4000K/ 5000K	~18,000 Lm ~21,000 Lm ~30,000 Lm	Photocell Motion Sensor	Ra70	UL/ENEC/CE/ CB/RoHS CQC





ILLUMINATE WITH EFFICIENCY AND DIRECTION

## SLR02 LED STREET LIGHT SERIES



ILLUMINATE WITH EFFICIENCY AND DIRECTION

M: +971 56 243 8755 E: [info@redeanled.com](mailto:info@redeanled.com)  
W: [www.redeanled.com](http://www.redeanled.com)