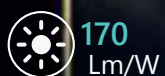


CE CB  RoHS

ALR02

Area Light Series

ALR02 is a cost-effective, lightweight, ultra-thin Area Light Series that is at least 10% cheaper than similar options. It is commonly used in outdoor sports venues, swimming pools, industrial sites, logistics parks, car parks, outdoor billboards, road intersections, and architectural lighting.



170
Lm/W



IP66
Wet Location



IK08
Protection Provide



5 YEARS
WARRANTY



3-IN-1 CCT Selectable
(Optional)



3-IN-1 Wattage Selectable
(Optional)



Reduced 50% weight
Only 13Kg, 500W/600W

REDEANLEDTM

ILLUMINATE WITH EFFICIENCY AND DIRECTION

Compare to Similar Flood Light, ALR02 Cost Down $\geq 10\%$

3-in-1 CCT and Wattage Selectable Solutions (Optional)

ALR02 offers a 3-in-1 power and CCT adjustable solution, allowing for flexible application in various locations. *This versatility facilitates better stock distribution for customers, reducing the risk of inventory backlog.*

ONLY FOR Non-isolated Driver:

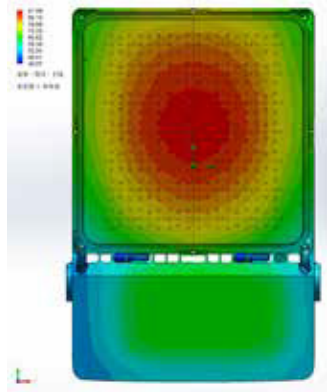
3-in-1 CCT Selectable » » 3000K-4000K-5000K
4000K-5000K-6000K

Isolated and Non-isolated Driver are All Available:

3-in-1 Watt Selectable » » 400: 200W-300W-400W
600: 400W-500W-600W

Good Heat Management

- The ALR02 utilizes high thermal conductivity die-casting AL material, ensuring excellent thermal conductivity.
- The separate installation of the driver and LEDs prevents heat effects on the driver.
- The convective hole facilitates rapid heat dispersion, enhancing the overall heat dissipation and maintaining performance stability.



IP66 Dual Waterproof Reduce 10% Probability of Water Leakage

The driver cavity and LEDs cavity of ALR02 are designed separately, allowing for independent waterproofing. This design reduces the leakage rate by 10% compared to integrated designs, improving stability and performance of the light.

Dual Breath Value Design

ALR02 is equipped with metal breath valves in both the driver and LEDs cavities. These valves maintain a balanced airflow inside and outside the cavities, effectively preventing moisture mist from affecting the electrical components and reducing light attenuation caused by water mist on the luminous surface.

The metal sheet can be removable, without screws on the surface, and the appearance is complete.

Glass + Lens

ALR02 floodlight features a glass and lens combination for double protection, with anti-impact IK08 rating and high weather resistance. The glass shields the PC lens from UV rays, ensuring long-lasting high brightness illumination.

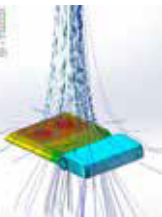
Robust Bracket with 5-Degree Tick Marks

The U-bracket that offers good adjustments using a 5-degree tick marks knob, providing precise control over the direction of light. This flexibility, combined with its adaptable light types that include both symmetry and asymmetry, ensures accurate illumination in desired positions. This makes the ALR02 an optimal choice for customers who prioritize high construction precision.

U-bracket is offers exceptional strength to withstand outdoor wind pressure, ensuring stability and reliability.

High light efficiency reaches up to 180Lm/W, Standards 170Lm/W

The convective hole facilitates rapid heat dispersion, enhancing the overall heat dissipation and maintaining performance stability.



The connection interfaces is reserved, DALI, 0-10V dimming optional.



ONE OF THE MOST POPULAR FLOODLIGHTS AMONG AGENTS

The ALR02's expandable power box cover ensures excellent performance and customizable aesthetics, meeting the needs of different agents in various regions and providing tailored solutions for specific customers.

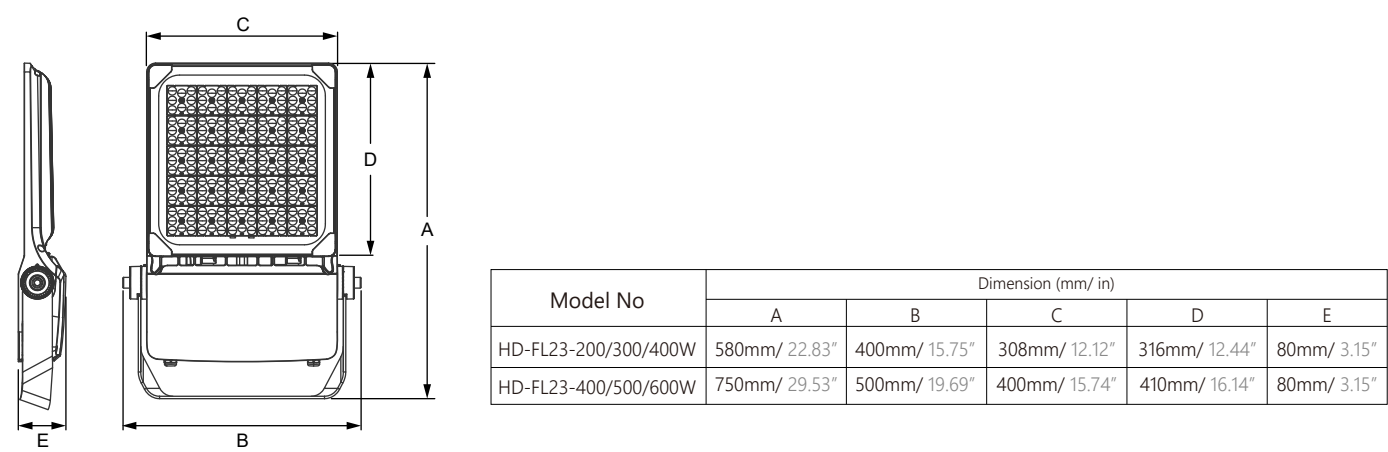




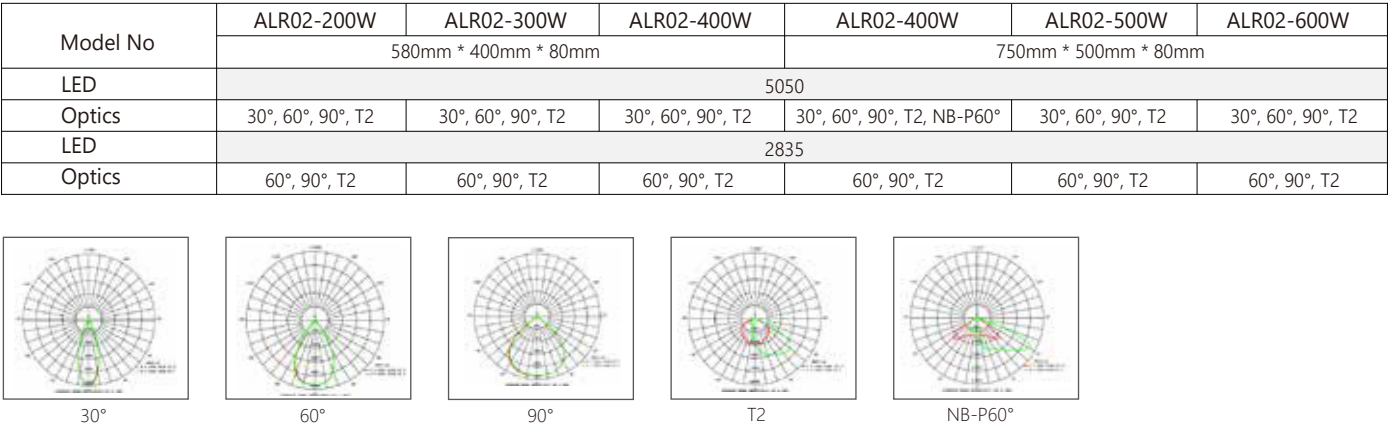
Parameters

Model No.	ALR02-200W	ALR02-300W	ALR02-400W	ALR02-400W	ALR02-500W	ALR02-600W
Wattage (Standards)	200W	300W	400W	400W	500W	600W
Light Efficiency (@Beam90°)	170Lm/W			170Lm/W		
Lumen Output (@4000K)	34,000Lm	51,000Lm	68,000Lm	68,000Lm	85,000Lm	102,000Lm
CCT (Standards)	3000K, 4000K, 5000K, 5700K, 6500K Optional			3000K, 4000K, 5000K, 5700K, 6500K Optional		
Beam Angle	30° / 60° / 90° / T2			NB-P60° (400W) / 30° / 60° / 90° / T2		
CRI	70					
SDCM	≤5					
Input Voltage	100-277VAC / 220-240VAC 50/60Hz					
Power Factor	≥0.90					
THD	≤20%					
Percent Flicker (%)	<10%					
Surge Protection	10KV					
Protection Against Electric	Class I					
IP	IP66					
IK	IK08					
EPA	2.16 ft²			3.53 ft²		
Operating Temp Ranger	-40°C~+50°C @Outdoor / -40°F~+122°F @Outdoor					
Intelligent Control	0-10V / DALI2.0					
Lifetime	100,000H (L70B50 @25°C) / (L70B50 @77°F)					
Net Weight (kg/ lbs)	7.5 kg±0.5 / 16.5 lbs±1.1			13 kg±0.5 / 28.6 lbs±1.1		
Dimension (mm/ in)	580*400*80mm/ 22.83*15.75*3.15in			750*500*80mm/ 29.53*19.69*3.15in		
CTN (mm/ in)	640*420*140mm/ 25.20*16.54*5.51in			800*530*140mm/ 31.50*20.87*3.15in		
Warranty	5 years					
Certificate	CE / CB / ENEC / RoHS					
Brand	LED Vendor: Lumileds Driver Vendor: Sosen, Inventronics (non-isolated / isolated)					
Material	Structure: Die-casting/ADC12 Finish: Powder Coated Lens: Polycarbonate+Glass Color: Gray					

Dimension (mm)



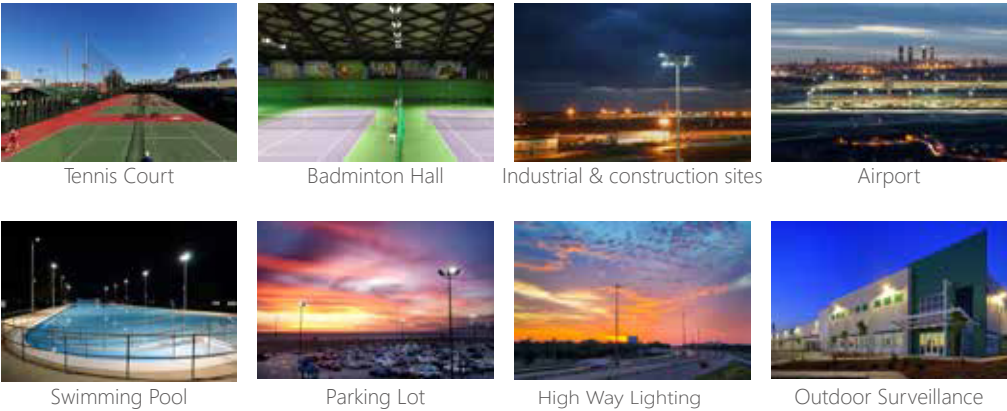
Photometric Diagrams



Applications

Outdoor / Indoor / Industrial

- Sports & recreational fields
- Large-scale outdoor events
- Industrial and construction sites
- Parking lots and garages
- Landscaping and architectural lighting
- Security and outdoor surveillance



Address: PO Box 19582, Dubai, UAE
T: +9714 8868 911 M: +971 56 243 8755
E: info@redeanled.com Web: www.redeanled.com

V1.0
20241017